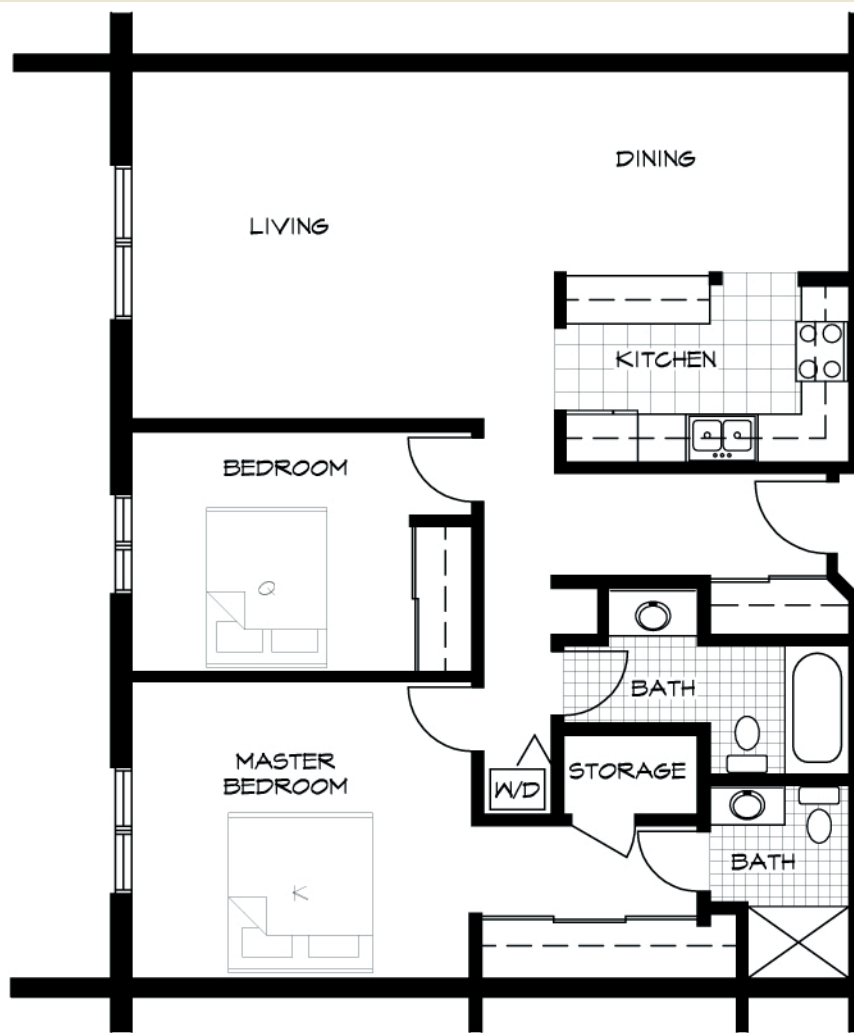


Baypoint Estates

1902 St. Louis Avenue Duluth, MN



FLOOR PLAN - TYPICAL 2 BEDROOM
1/8" = 1'-0"

| | |
|-------------------------|---|
| Units | 76 |
| Pricing | 1 Bedrooms From \$830 2 Bedrooms From \$985 |
| Controlled Entry | Yes |
| Utilities | Heat included, Resident pays electric |
| Laundry Facility | Washer & Dryer in each unit |
| Decks\Patios | Yes |
| Parking\Garages | Off Street, 56 underground heated stalls (\$65/month) |
| Headbolt Heaters | Yes |
| Amenities | Club Room Exercise Room Sauna |
| Pets | No |

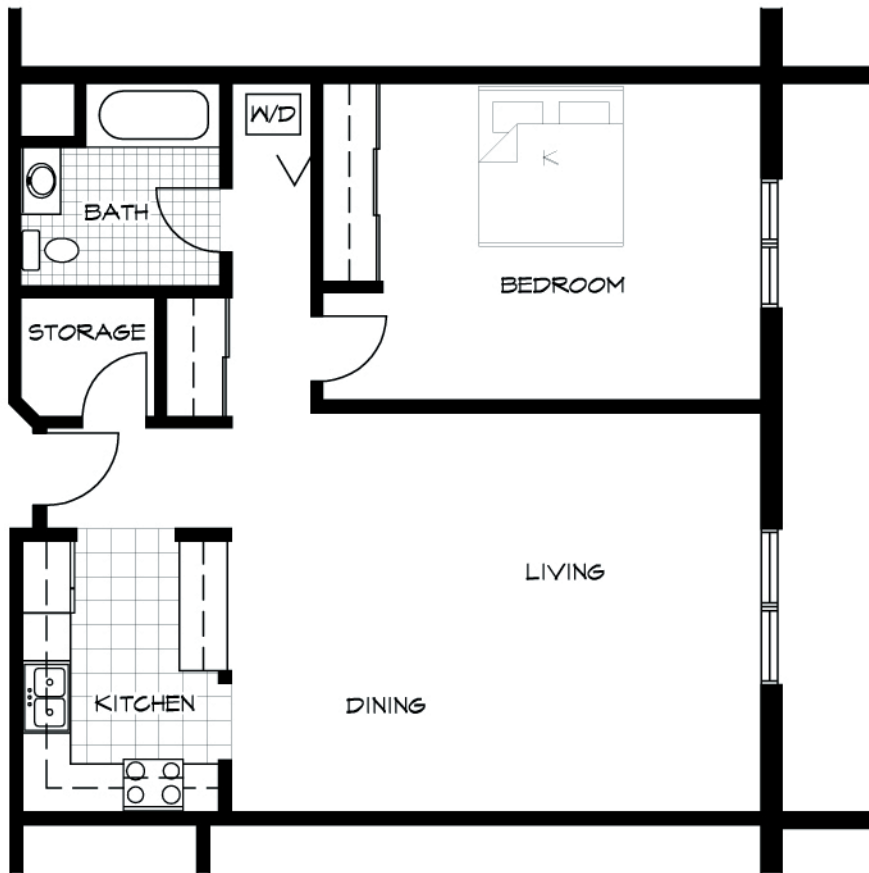
Contact: (218) 720-3712 - Email: info@melhus.org



MELHUS
MANAGEMENT
COMPANY
REAL ESTATE INVESTMENT SERVICES

Baypoint Estates

1902 St. Louis Avenue Duluth, MN



FLOOR PLAN - TYPICAL 1 BEDROOM

1/8" = 1'-0"

| | |
|-------------------------|---|
| Units | 76 |
| Pricing | 1 Bedrooms From \$830 2 Bedrooms From \$985 |
| Controlled Entry | Yes |
| Utilities | Heat included, Resident pays electric |
| Laundry Facility | Washer & Dryer in each unit |
| Decks\Patios | Yes |
| Parking\Garages | Off Street, 56 underground heated stalls (\$65/month) |
| Headbolt Heaters | Yes |
| Amenities | Club Room Exercise Room Sauna |
| Pets | No |

Contact: (218) 720-3712 - Email: info@melhus.org



MELHUS
MANAGEMENT
COMPANY
REAL ESTATE INVESTMENT SERVICES