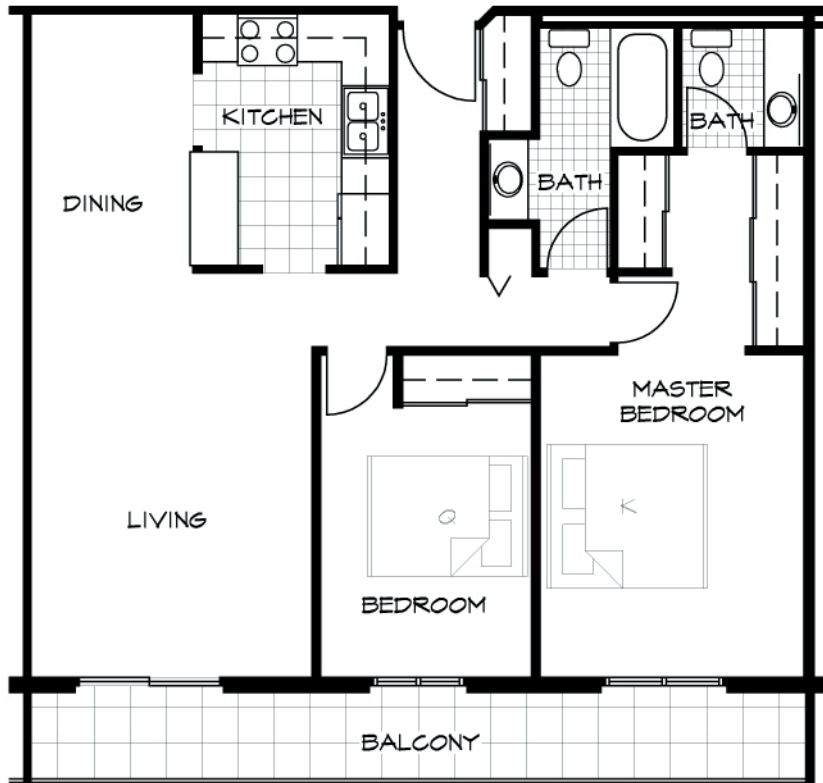


Baypoint Shoreline

1900 St. Louis Avenue Duluth, MN



FLOOR PLAN - TYPICAL 2 BEDROOM
1/8" = 1'-0"

Units	64
Pricing	1 Bedrooms From \$730 2 Bedrooms From \$875
Controlled Entry	Yes
Utilities	Heat included, Resident pays electric
Laundry Facility	Yes, coin operated units on each floor
Decks\Patios	Yes
Parking\Garages	Off Street, 38 underground heated stalls (\$65-80/month)
Headbolt Heaters	Yes
Amenities	Access to the following rooms at Baypoint Estates : Club Room Exercise Room Sauna
Pets	No

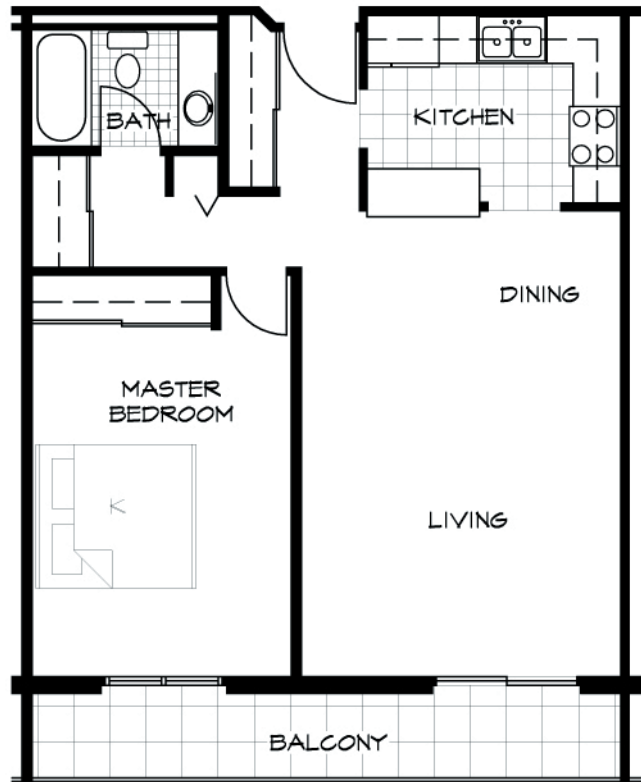
Contact: (218) 720-3712 - Email: info@melhus.org



MELHUS
MANAGEMENT
COMPANY
REAL ESTATE INVESTMENT SERVICES

Baypoint Shoreline

1900 St. Louis Avenue Duluth, MN



FLOOR PLAN - TYP 1 BEDROOM
1/8" = 1'-0"

Units	64
Pricing	1 Bedrooms From \$730 2 Bedrooms From \$875
Controlled Entry	Yes
Utilities	Heat included, Resident pays electric
Laundry Facility	Yes, coin operated units on each floor
Decks\Patios	Yes
Parking\Garages	Off Street, 38 underground heated stalls (\$65-80/month)
Headbolt Heaters	Yes
Amenities	Access to the following rooms at Baypoint Estates : Club Room Exercise Room Sauna
Pets	No

Contact: (218) 720-3712 - Email: info@melhus.org



**MELHUS
MANAGEMENT
COMPANY**
REAL ESTATE INVESTMENT SERVICES