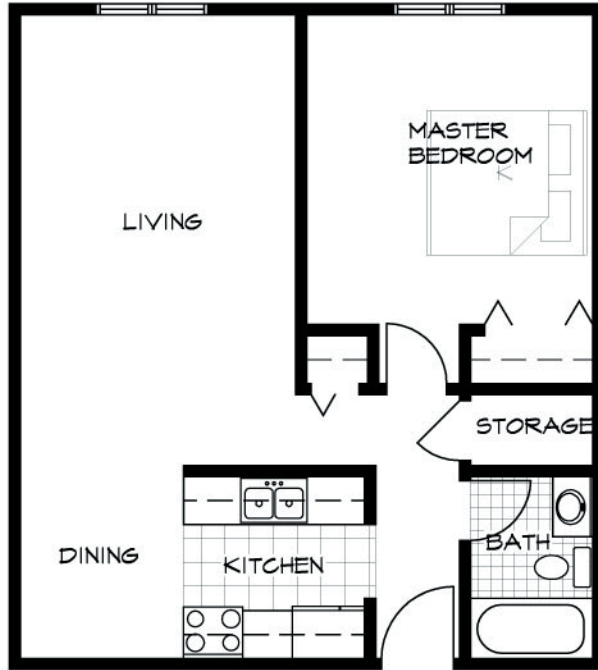


Edgecliff Apartments

1015 East Central Entrance

Duluth, MN



FLOOR PLAN - TYPICAL 1 BEDROOM

1/8" = 1'-0"

Units	18
Pricing	1 Bedrooms From \$550 2 Bedrooms From \$650
Controlled Entry	Yes
Utilities	Resident pays electric (heat)
Laundry Facility	Yes, coin operated units on each floor
Decks\Patios	Yes, 4 units
Parking\Garages	Off-Street
Headbolt Heaters:	No
Pets	No

Contact: (218) 720-3712 - Email: info@melhus.org



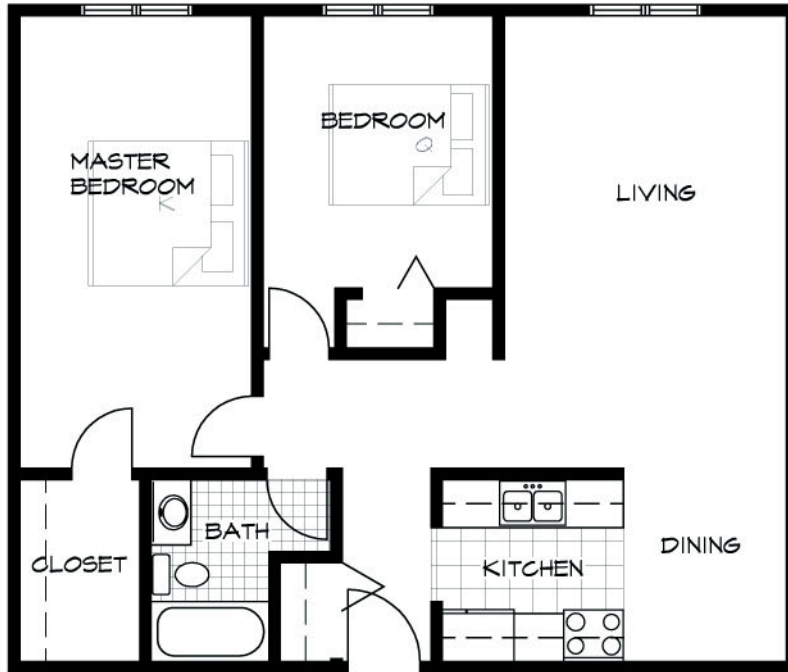
MELHUS
MANAGEMENT
COMPANY

REAL ESTATE INVESTMENT SERVICES

Edgecliff Apartments

1015 East Central Entrance

Duluth, MN



FLOOR PLAN - TYPICAL 2 BEDROOM

1/8" = 1'-0"

Units	18
Pricing	1 Bedrooms From \$550 2 Bedrooms From \$650
Controlled Entry	Yes
Utilities	Resident pays electric (heat)
Laundry Facility	Yes, coin operated units on each floor
Decks\Patios	Yes, 4 units
Parking\Garages	Off-Street
Headbolt Heaters:	No
Pets	No

Contact: (218) 720-3712 - Email: info@melhus.org



MELHUS
MANAGEMENT
COMPANY

REAL ESTATE INVESTMENT SERVICES