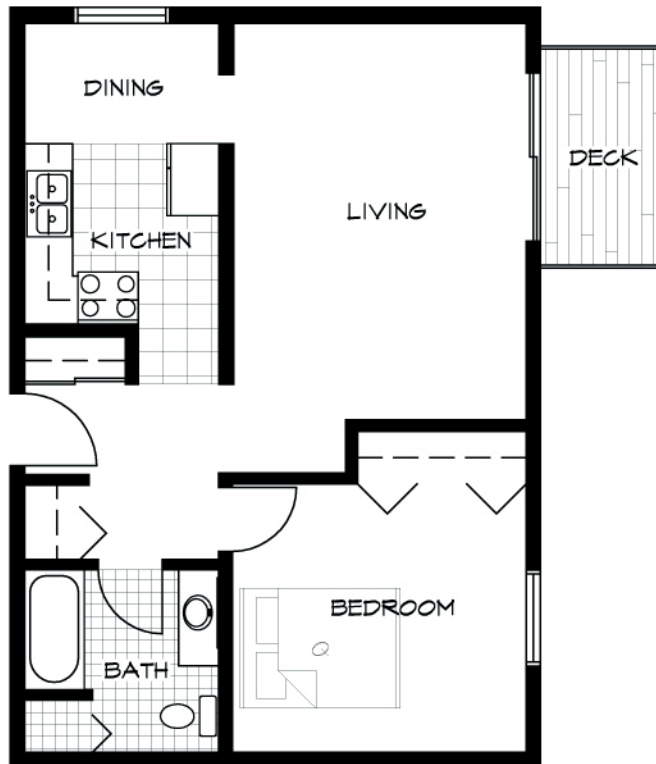


# Third Street Apartments

1001 East 3rd Street

Duluth, MN



FLOOR PLAN - TYPICAL 1 BEDROOM  
1/8" = 1'-0"

<b>Units</b>	18
<b>Pricing</b>	\$425-675
<b>Controlled Entry</b>	No
<b>Utilities</b>	Resident Pays electric (heat), phn, cbl
<b>Laundry Facility</b>	Yes, coin.
<b>Decks\Patios</b>	Yes (13 units)
<b>Parking\Garages</b>	Off-St., 8 garages (\$25/M)
<b>Headbolt Heaters</b>	No
<b>Amenities</b>	Maintenance, mgr on call
<b>Pets</b>	No

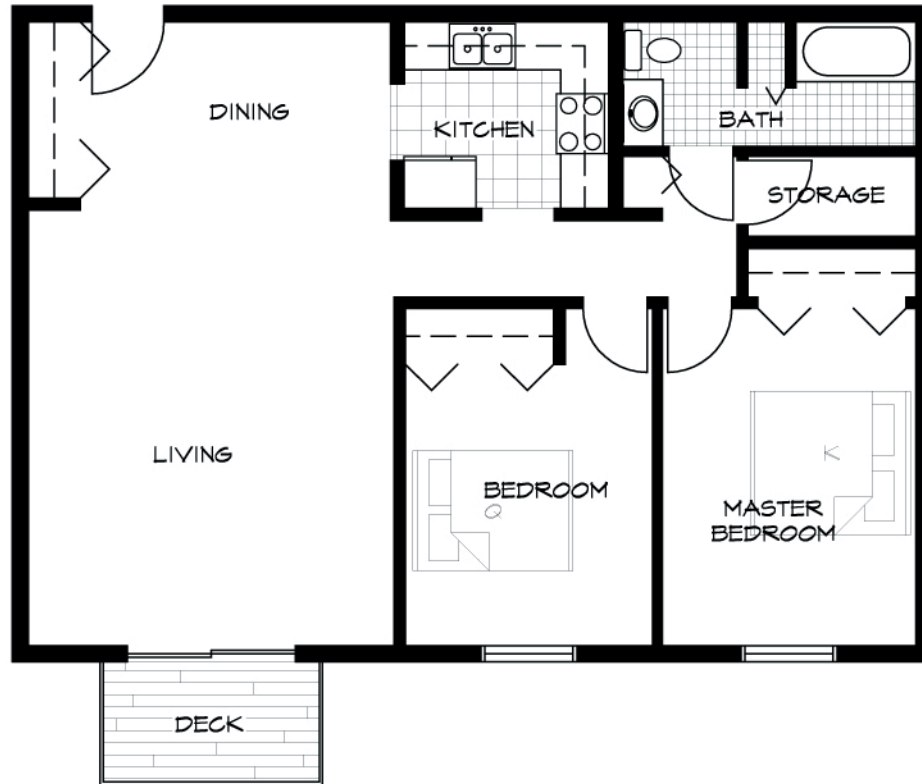
Contact: (218) 720-3712 - Email: [info@melhus.org](mailto:info@melhus.org)



MELHUS  
MANAGEMENT  
COMPANY  
REAL ESTATE INVESTMENT SERVICES

# Third Street Apartments

1001 East 3rd Street Duluth, MN



FLOOR PLAN - TYPICAL 2 BEDROOM

1/8" = 1'-0"

<b>Units</b>	18
<b>Pricing</b>	\$425-675
<b>Controlled Entry</b>	No
<b>Utilities</b>	Resident Pays electric (heat), phn, cbl
<b>Laundry Facility</b>	Yes, coin.
<b>Decks\Patios</b>	Yes (13 units)
<b>Parking\Garages</b>	Off-St, 8 garages (\$25/M)
<b>Headbolt Heaters</b>	No
<b>Amenities</b>	Maintenance, mgr on call
<b>Pets</b>	No

Contact: (218) 720-3712 - Email: [info@melhus.org](mailto:info@melhus.org)



MELHUS  
MANAGEMENT  
COMPANY  
REAL ESTATE INVESTMENT SERVICES