

# The Harbours

300 West Michigan Street Duluth, MN

## Contents

1 Bedroom - 601	Page 2
2 Bedroom - 602	Page 3
1 Bedroom + Den - 603	Page 4
1 Bedroom + Den - 604	Page 5
1 Bedroom + Den - 605	Page 6
1 Bedroom + Den - 606	Page 7
2 Bedroom - 607	Page 8
2 Bedroom - 608	Page 9
Studio	Page 10
1 Bedroom - "01 Unit"	Page 11
2 Bedroom - "02 Unit"	Page 12
1 Bedroom + Den - "03 Unit"	Page 13
1 Bedroom + Den - "04 Unit"	Page 14
1 Bedroom + Den - "05 Unit"	Page 15
2 Bedroom - "06 Unit"	Page 16
2 Bedroom - "07 Unit"	Page 17

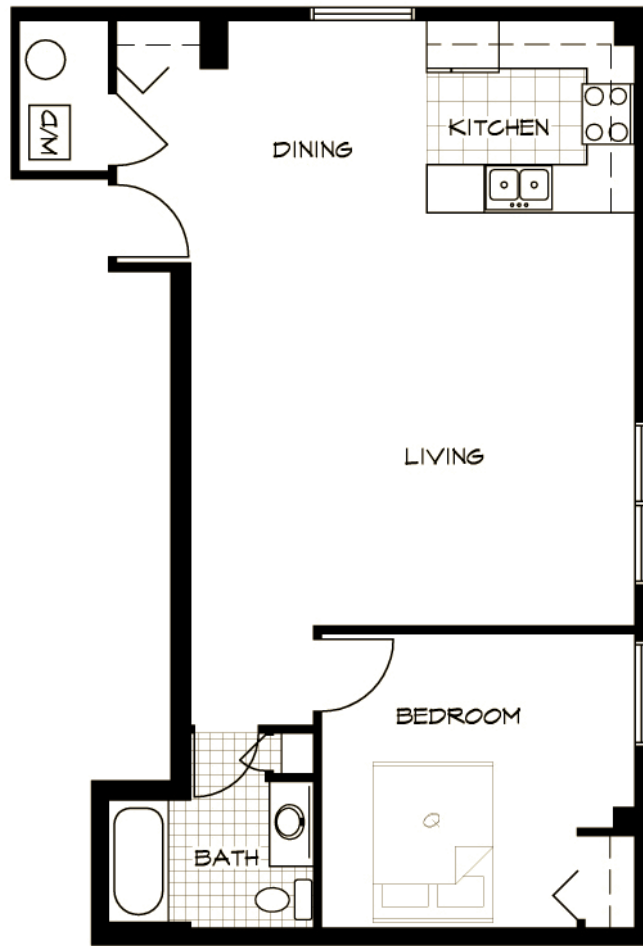
Contact: (218) 720-3712  
Email: [info@melhus.org](mailto:info@melhus.org)



MELHUS  
MANAGEMENT  
COMPANY  
REAL ESTATE INVESTMENT SERVICES

# The Harbours

300 West Michigan Street Duluth, MN



FLOOR PLAN - 1 BEDROOM - 601  
1/8" = 1'-0"

<b>Units</b>	38
<b>Pricing</b>	1 Bedrooms From \$1,050 (facing the harbor) 2 Bedrooms From \$1,050 (facing the downtown) From \$1,250 (facing the harbor)
<b>Controlled Entry</b>	Yes
<b>Utilities</b>	Heat & A/C included, Resident pays electric
<b>Laundry Facility</b>	Washer & Dryer in each unit
<b>Decks\Patios</b>	Solariums (9 units)
<b>Parking\Garages</b>	Covered Parking Ramp stalls (1 included with apartment) Additional stalls available for \$53.75/month
<b>Headbolt Heaters</b>	No
<b>Amenities</b>	Club Room Two Guest Rooms (\$25/night) Manager On-site
<b>Pets</b>	No

Contact: (218) 720-3712

Email: [info@melhus.org](mailto:info@melhus.org)



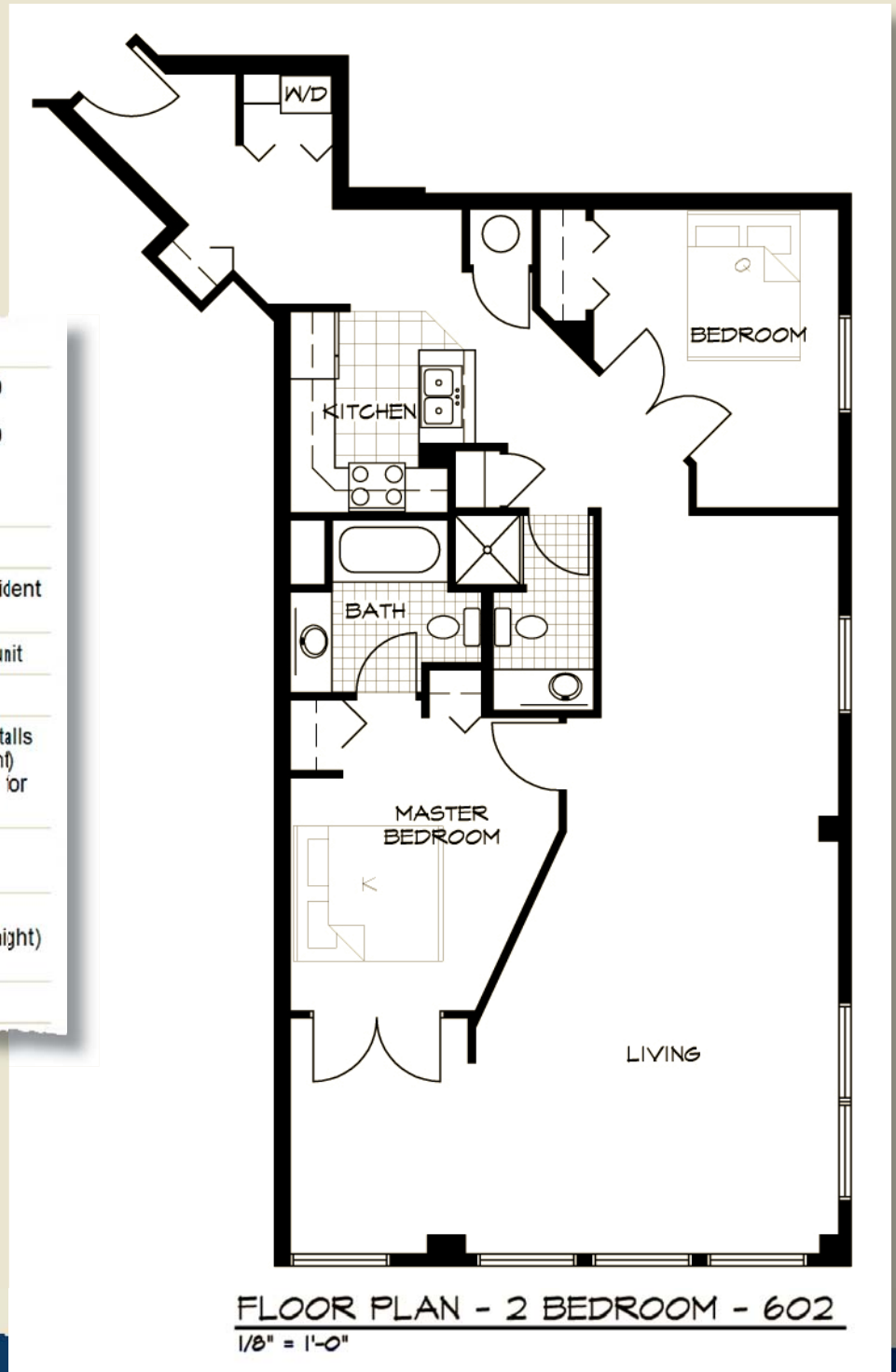
MELHUS  
MANAGEMENT  
COMPANY

REAL ESTATE INVESTMENT SERVICES

# The Harbours

300 West Michigan Street Duluth, MN

<b>Units</b>	38
<b>Pricing</b>	1 Bedrooms From \$1,050 (facing the harbor) 2 Bedrooms From \$1,050 (facing the downtown) From \$1,250 (facing the harbor)
<b>Controlled Entry</b>	Yes
<b>Utilities</b>	Heat & A/C included, Resident pays electric
<b>Laundry Facility</b>	Washer & Dryer in each unit
<b>Decks\Patios</b>	Solariums (9 units)
<b>Parking\Garages</b>	Covered Parking Ramp stalls (1 included with apartment) Additional stalls available for \$53.75/month
<b>Headbolt Heaters</b>	No
<b>Amenities</b>	Club Room Two Guest Rooms (\$25/night) Manager On-site
<b>Pets</b>	No



Contact: (218) 720-3712

Email: [info@melhus.org](mailto:info@melhus.org)

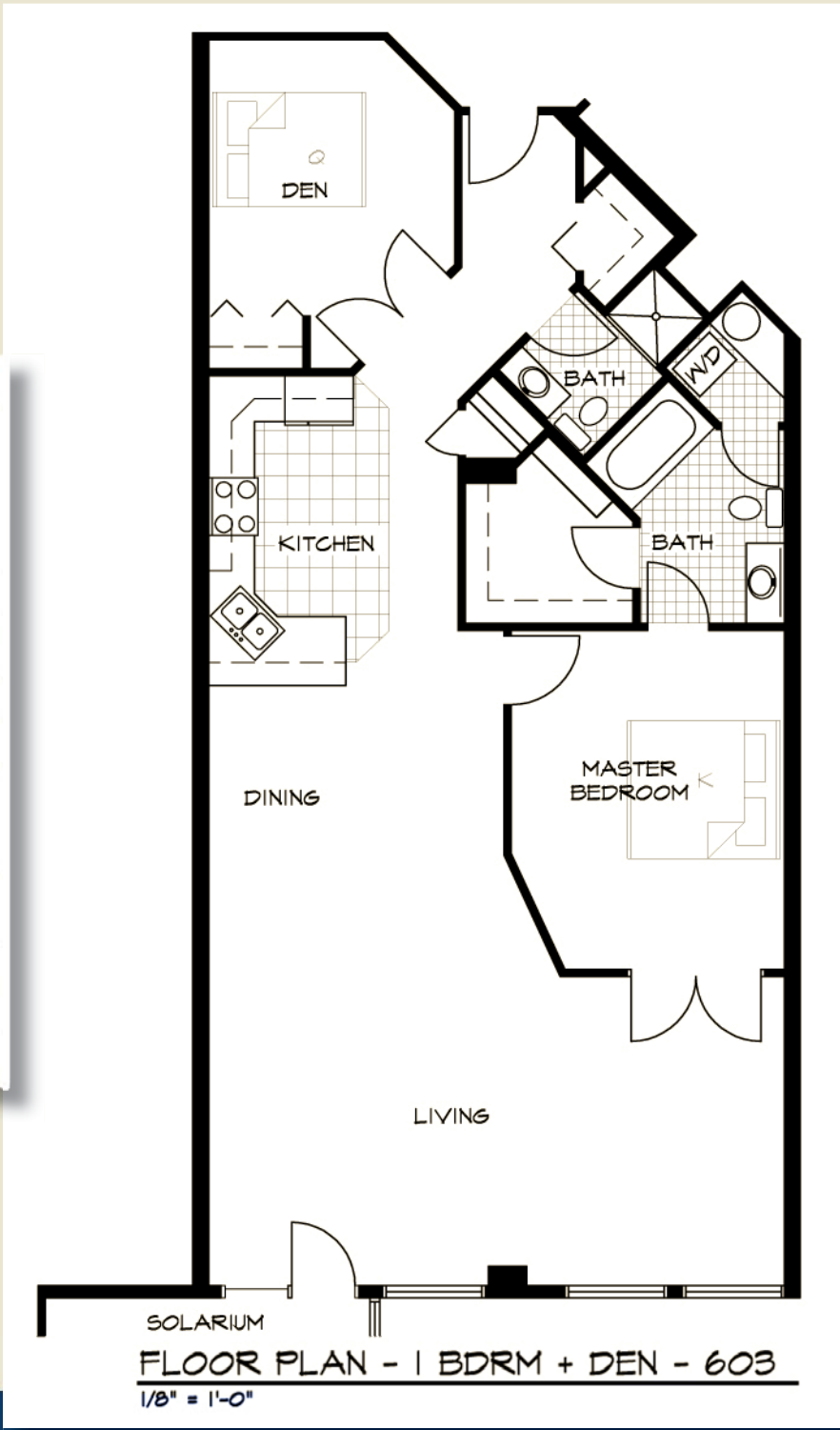


MELHUS  
MANAGEMENT  
COMPANY  
REAL ESTATE INVESTMENT SERVICES

# The Harbours

300 West Michigan Street Duluth, MN

<b>Units</b>	38
<b>Pricing</b>	1 Bedrooms From \$1,050 (facing the harbor) 2 Bedrooms From \$1,050 (facing the downtown) From \$1,250 (facing the harbor)
<b>Controlled Entry</b>	Yes
<b>Utilities</b>	Heat & A/C included, Resident pays electric
<b>Laundry Facility</b>	Washer & Dryer in each unit
<b>Decks/Patios</b>	Solariums (9 units)
<b>Parking/Garages</b>	Covered Parking Ramp stalls (1 included with apartment) Additional stalls available for \$53.75/month
<b>Headbolt Heaters</b>	No
<b>Amenities</b>	Club Room Two Guest Rooms (\$25/night) Manager On-site
<b>Pets</b>	No



\* Unit has attached solarium

Contact: (218) 720-3712

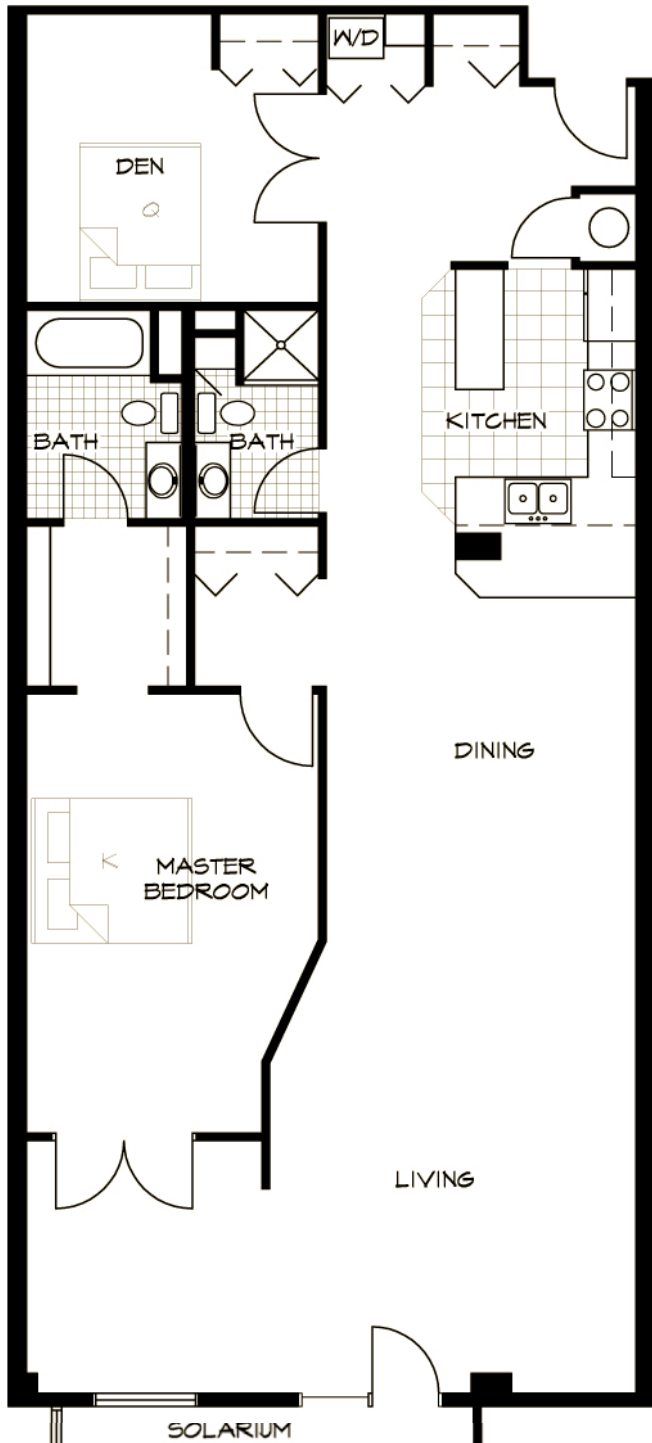
Email: [info@melhus.org](mailto:info@melhus.org)



MELHUS  
MANAGEMENT  
COMPANY  
REAL ESTATE INVESTMENT SERVICES

# The Harbours

300 West Michigan Street Duluth, MN



FLOOR PLAN - 1 BDRM + DEN - 604  
1/8" = 1'-0"

<b>Units</b>	38
<b>Pricing</b>	1 Bedrooms From \$1,050 (facing the harbor) 2 Bedrooms From \$1,050 (facing the downtown) From \$1,250 (facing the harbor)
<b>Controlled Entry</b>	Yes
<b>Utilities</b>	Heat & A/C included, Resident pays electric
<b>Laundry Facility</b>	Washer & Dryer in each unit
<b>Decks\Patios</b>	Solariums (9 units)
<b>Parking\Garages</b>	Covered Parking Ramp stalls (1 included with apartment) Additional stalls available for \$53.75/month
<b>Headbolt Heaters</b>	No
<b>Amenities</b>	Club Room Two Guest Rooms (\$25/night) Manager On-site
<b>Pets</b>	No

\* Unit has attached solarium

Contact: (218) 720-3712

Email: [info@melhus.org](mailto:info@melhus.org)

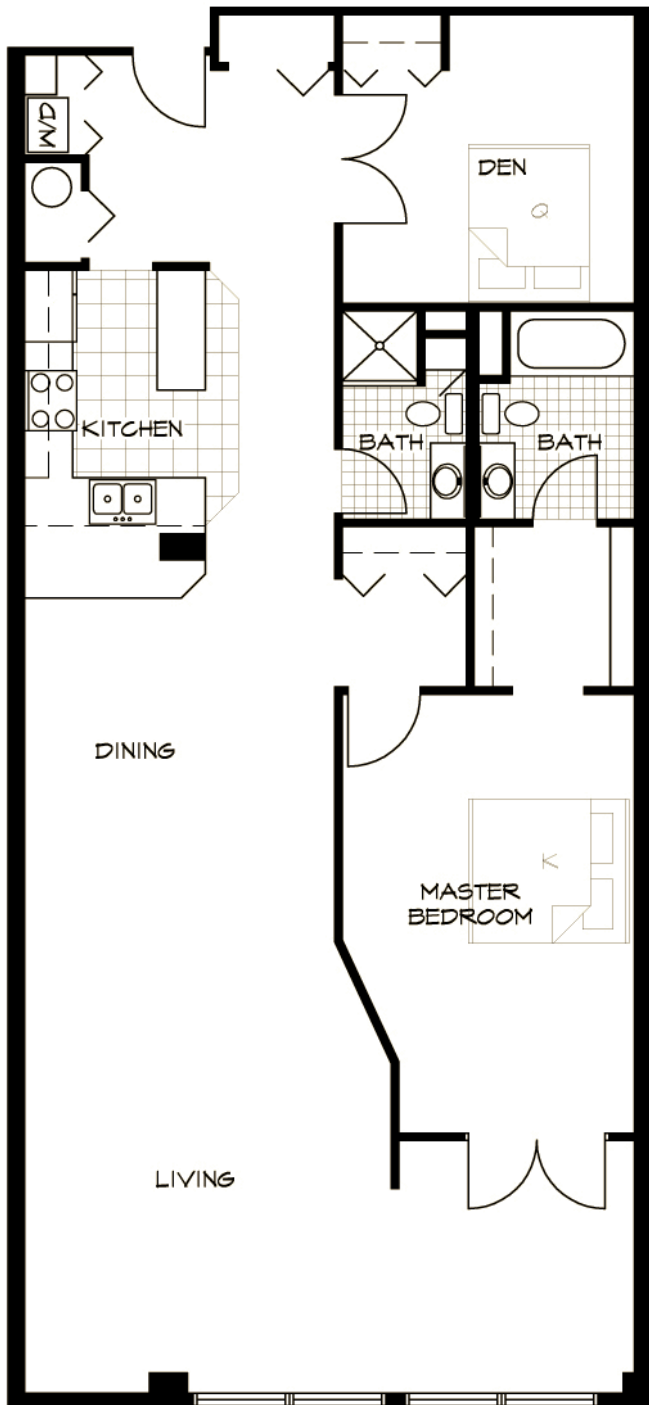


MELHUS  
MANAGEMENT  
COMPANY

REAL ESTATE INVESTMENT SERVICES

# The Harbours

300 West Michigan Street Duluth, MN



FLOOR PLAN - 1 BDRM + DEN - 605  
1/8" = 1'-0"

<b>Units</b>	38
<b>Pricing</b>	1 Bedrooms From \$1,050 (facing the harbor) 2 Bedrooms From \$1,050 (facing the downtown) From \$1,250 (facing the harbor)
<b>Controlled Entry</b>	Yes
<b>Utilities</b>	Heat & A/C included, Resident pays electric
<b>Laundry Facility</b>	Washer & Dryer in each unit
<b>Decks/Patios</b>	Solariums (9 units)
<b>Parking/Garages</b>	Covered Parking Ramp stalls (1 included with apartment) Additional stalls available for \$53.75/month
<b>Headbolt Heaters</b>	No
<b>Amenities</b>	Club Room Two Guest Rooms (\$25/night) Manager On-site
<b>Pets</b>	No

Contact: (218) 720-3712

Email: [info@melhus.org](mailto:info@melhus.org)

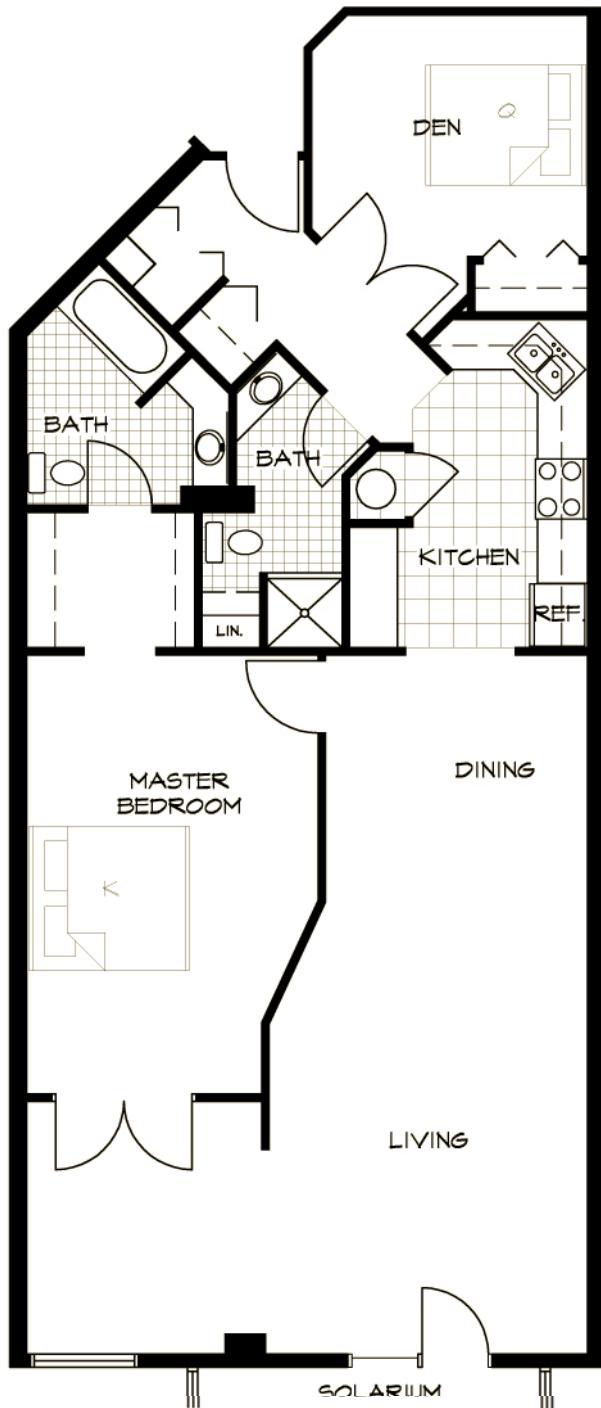


MELHUS  
MANAGEMENT  
COMPANY

REAL ESTATE INVESTMENT SERVICES

# The Harbours

300 West Michigan Street Duluth, MN



<b>Units</b>	38
<b>Pricing</b>	1 Bedrooms From \$1,050 (facing the harbor) 2 Bedrooms From \$1,050 (facing the downtown) From \$1,250 (facing the harbor)
<b>Controlled Entry</b>	Yes
<b>Utilities</b>	Heat & A/C included, Resident pays electric
<b>Laundry Facility</b>	Washer & Dryer in each unit
<b>Decks\Patios</b>	Solariums (9 units)
<b>Parking\Garages</b>	Covered Parking Ramp stalls (1 included with apartment) Additional stalls available for \$53.75/month
<b>Headbolt Heaters</b>	No
<b>Amenities</b>	Club Room Two Guest Rooms (\$25/night) Manager On-site
<b>Pets</b>	No

\* Unit has attached solarium

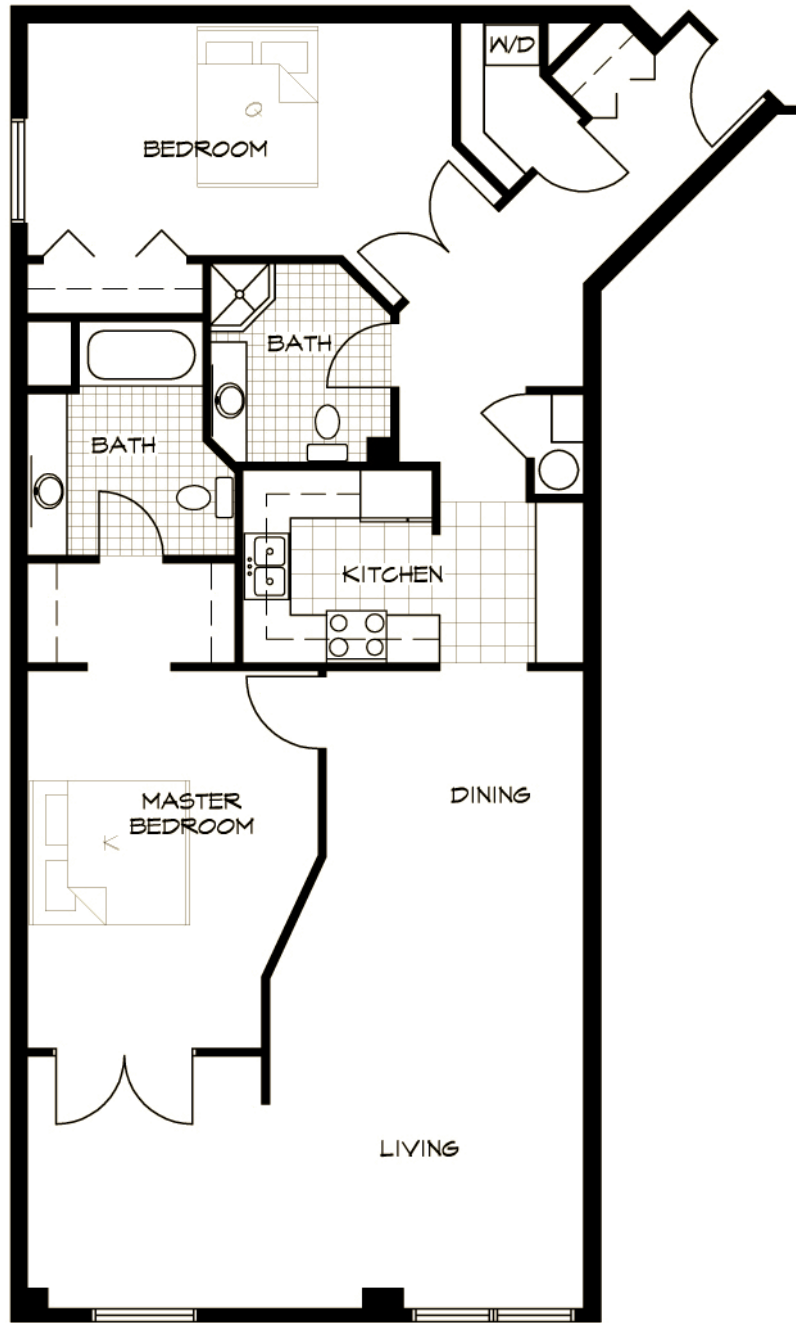
Contact: (218) 720-3712  
Email: info@melhus.org



MELHUS  
MANAGEMENT  
COMPANY  
REAL ESTATE INVESTMENT SERVICES

# The Harbours

300 West Michigan Street Duluth, MN



FLOOR PLAN - 2 BEDROOM - 607  
1/8" = 1'-0"

<b>Units</b>	38
<b>Pricing</b>	1 Bedrooms From \$1,050 (facing the harbor) 2 Bedrooms From \$1,050 (facing the downtown) From \$1,250 (facing the harbor)
<b>Controlled Entry</b>	Yes
<b>Utilities</b>	Heat & A/C included, Resident pays electric
<b>Laundry Facility</b>	Washer & Dryer in each unit
<b>Decks\Patios</b>	Solariums (9 units)
<b>Parking\Garages</b>	Covered Parking Ramp stalls (1 included with apartment) Additional stalls available for \$53.75/month
<b>Headbolt Heaters</b>	No
<b>Amenities</b>	Club Room Two Guest Rooms (\$25/night) Manager On-site
<b>Pets</b>	No

Contact: (218) 720-3712

Email: [info@melhus.org](mailto:info@melhus.org)

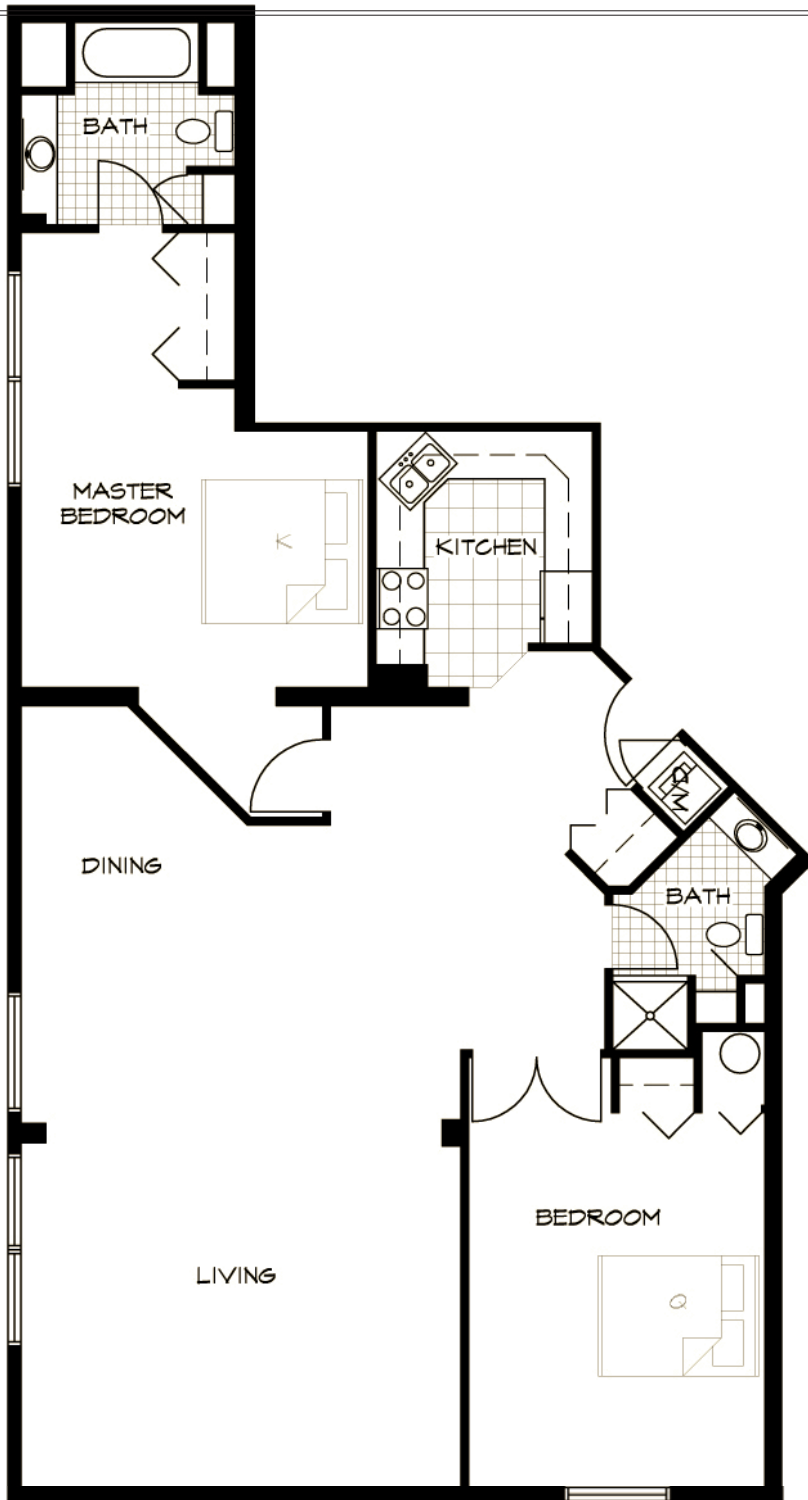


MELHUS  
MANAGEMENT  
COMPANY

REAL ESTATE INVESTMENT SERVICES

# The Harbours

300 West Michigan Street Duluth, MN



**FLOOR PLAN - 2 BEDROOM - 608**

1/8" = 1'-0"

<b>Units</b>	38
<b>Pricing</b>	1 Bedrooms From \$1,050 (facing the harbor) 2 Bedrooms From \$1,050 (facing the downtown) From \$1,250 (facing the harbor)
<b>Controlled Entry</b>	Yes
<b>Utilities</b>	Heat & A/C included, Resident pays electric
<b>Laundry Facility</b>	Washer & Dryer in each unit
<b>Decks/Patios</b>	Solariums (9 units)
<b>Parking/Garages</b>	Covered Parking Ramp stalls (1 included with apartment) Additional stalls available for \$53.75/month
<b>Headbolt Heaters</b>	No
<b>Amenities</b>	Club Room Two Guest Rooms (\$25/night) Manager On-site
<b>Pets</b>	No

Contact: (218) 720-3712

Email: [info@melhus.org](mailto:info@melhus.org)

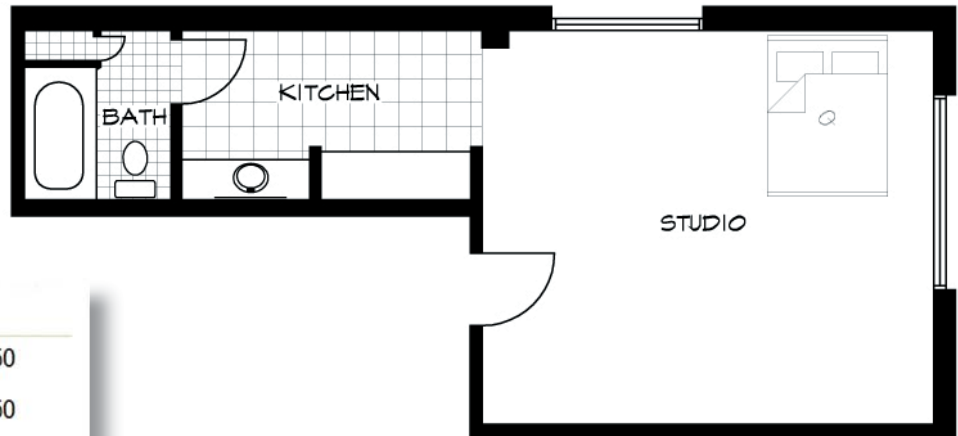


**MELHUS  
MANAGEMENT  
COMPANY**

REAL ESTATE INVESTMENT SERVICES

# The Harbours

300 West Michigan Street Duluth, MN



FLOOR PLAN - STUDIO

1/8" = 1'-0"

<b>Units</b>	38
<b>Pricing</b>	1 Bedrooms From \$1,050 (facing the harbor) 2 Bedrooms From \$1,050 (facing the downtown) From \$1,250 (facing the harbor)
<b>Controlled Entry</b>	Yes
<b>Utilities</b>	Heat & A/C included, Resident pays electric
<b>Laundry Facility</b>	Washer & Dryer in each unit
<b>Decks\Patios</b>	Solariums (9 units)
<b>Parking\Garages</b>	Covered Parking Ramp stalls (1 included with apartment) Additional stalls available for \$53.75/month
<b>Headbolt Heaters</b>	No
<b>Amenities</b>	Club Room Two Guest Rooms (\$25/night) Manager On-site
<b>Pets</b>	No

Contact: (218) 720-3712

Email: [info@melhus.org](mailto:info@melhus.org)



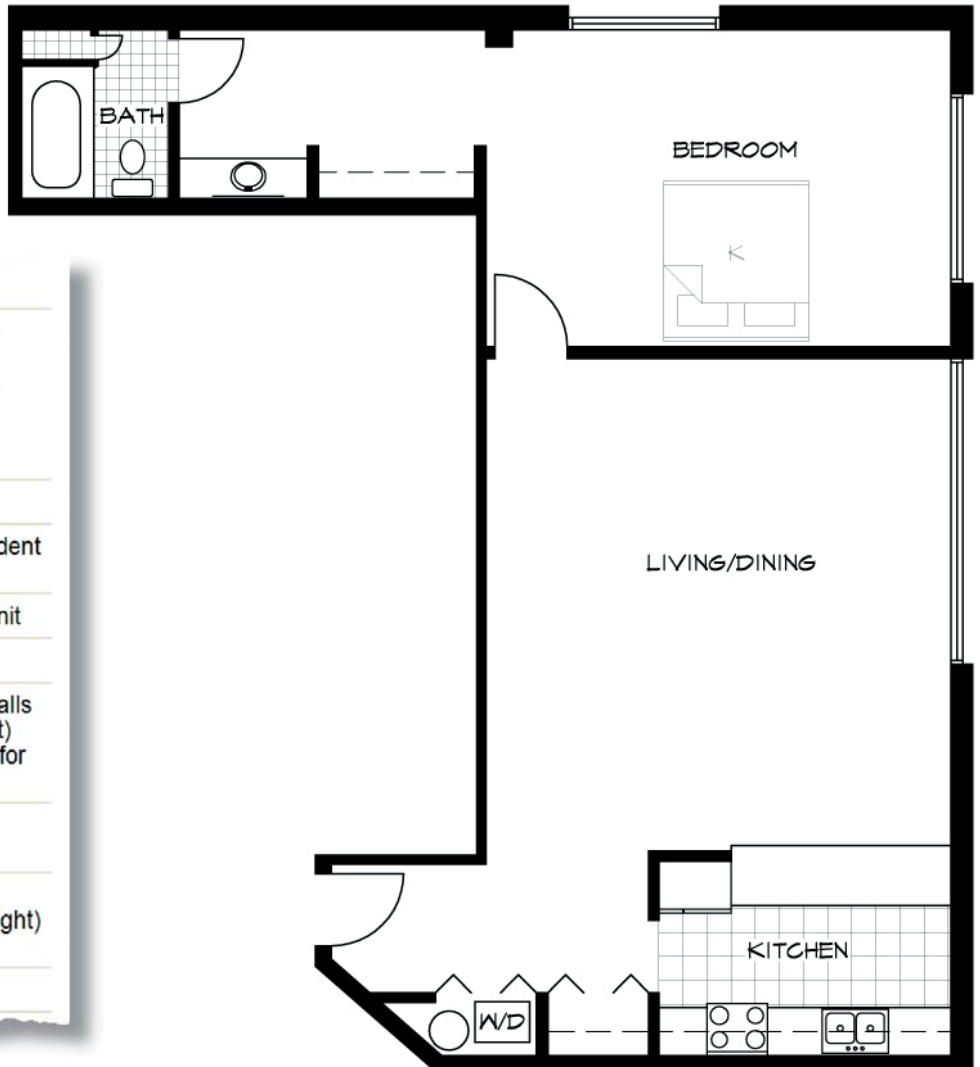
MELHUS  
MANAGEMENT  
COMPANY

REAL ESTATE INVESTMENT SERVICES

# The Harbours

300 West Michigan Street Duluth, MN

<b>Units</b>	38
<b>Pricing</b>	1 Bedrooms From \$1,050 (facing the harbor) 2 Bedrooms From \$1,050 (facing the downtown) From \$1,250 (facing the harbor)
<b>Controlled Entry</b>	Yes
<b>Utilities</b>	Heat & A/C included, Resident pays electric
<b>Laundry Facility</b>	Washer & Dryer in each unit
<b>Decks/Patios</b>	Solariums (9 units)
<b>Parking/Garages</b>	Covered Parking Ramp stalls (1 included with apartment) Additional stalls available for \$53.75/month
<b>Headbolt Heaters</b>	No
<b>Amenities</b>	Club Room Two Guest Rooms (\$25/night) Manager On-site
<b>Pets</b>	No



**FLOOR PLAN - TYP 1 BEDROOM - "01 UNIT"**  
1/8" = 1'-0"

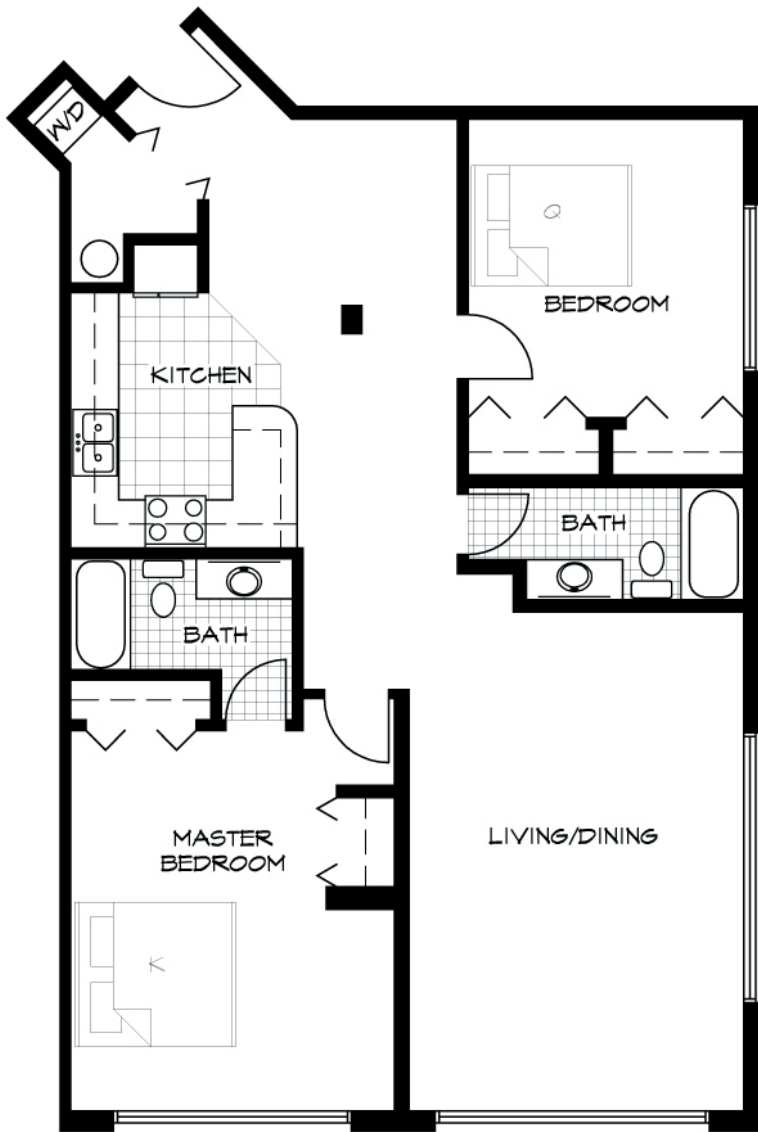
Contact: (218) 720-3712  
Email: [info@melhus.org](mailto:info@melhus.org)



**MELHUS  
MANAGEMENT  
COMPANY**  
REAL ESTATE INVESTMENT SERVICES

# The Harbours

300 West Michigan Street Duluth, MN



FLOOR PLAN - TYP 2 BEDROOM - "02 UNIT"  
1/8" = 1'-0"

<b>Units</b>	38
<b>Pricing</b>	1 Bedrooms From \$1,050 (facing the harbor) 2 Bedrooms From \$1,050 (facing the downtown) From \$1,250 (facing the harbor)
<b>Controlled Entry</b>	Yes
<b>Utilities</b>	Heat & A/C included, Resident pays electric
<b>Laundry Facility</b>	Washer & Dryer in each unit
<b>Decks/Patios</b>	Solariums (9 units)
<b>Parking/Garages</b>	Covered Parking Ramp stalls (1 included with apartment) Additional stalls available for \$53.75/month
<b>Headbolt Heaters</b>	No
<b>Amenities</b>	Club Room Two Guest Rooms (\$25/night) Manager On-site
<b>Pets</b>	No

Contact: (218) 720-3712

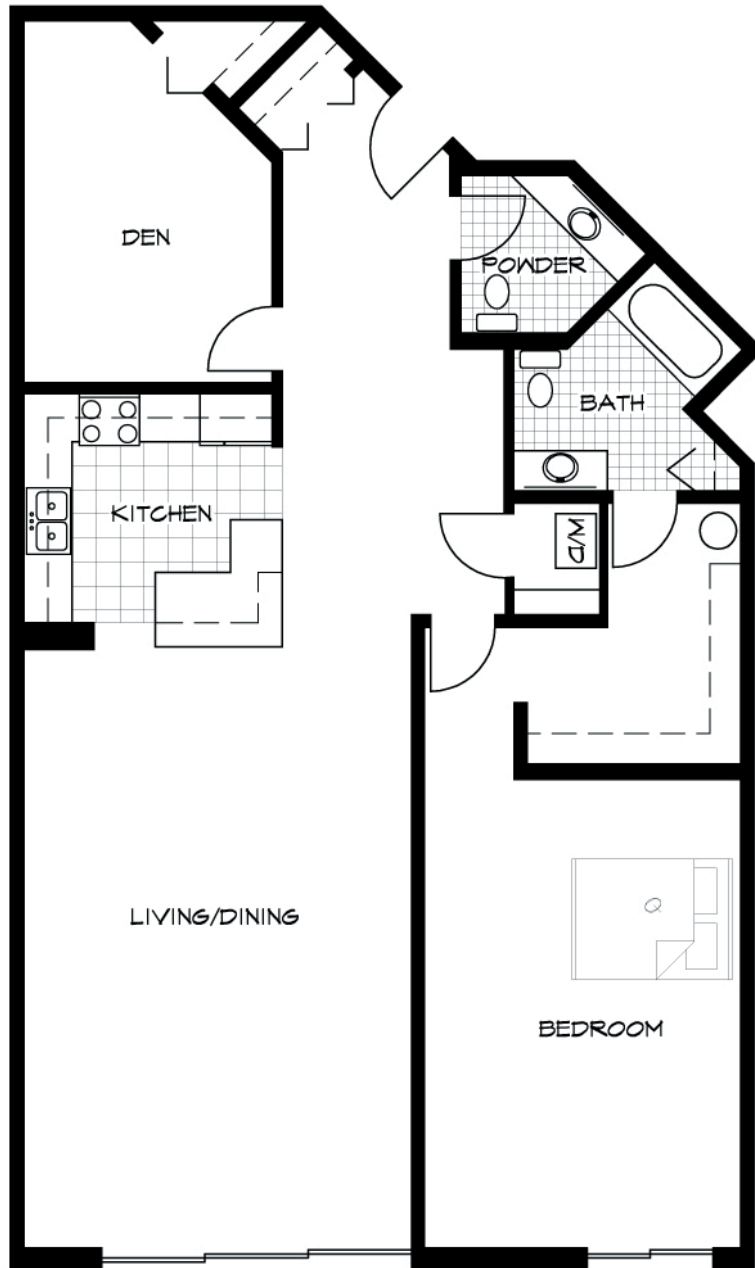
Email: [info@melhus.org](mailto:info@melhus.org)



MELHUS  
MANAGEMENT  
COMPANY  
REAL ESTATE INVESTMENT SERVICES

# The Harbours

300 West Michigan Street Duluth, MN



FLOOR PLAN - TYP 1 BEDROOM + DEN - "03 UNIT"  
 1/8" = 1'-0"

<b>Units</b>	38
<b>Pricing</b>	1 Bedrooms From \$1,050 (facing the harbor) 2 Bedrooms From \$1,050 (facing the downtown) From \$1,250 (facing the harbor)
<b>Controlled Entry</b>	Yes
<b>Utilities</b>	Heat & A/C included, Resident pays electric
<b>Laundry Facility</b>	Washer & Dryer in each unit
<b>Decks/Patios</b>	Solariums (9 units)
<b>Parking/Garages</b>	Covered Parking Ramp stalls (1 included with apartment) Additional stalls available for \$53.75/month
<b>Headbolt Heaters</b>	No
<b>Amenities</b>	Club Room Two Guest Rooms (\$25/night) Manager On-site
<b>Pets</b>	No

\* Unit may have attached solarium

Contact: (218) 720-3712

Email: [info@melhus.org](mailto:info@melhus.org)

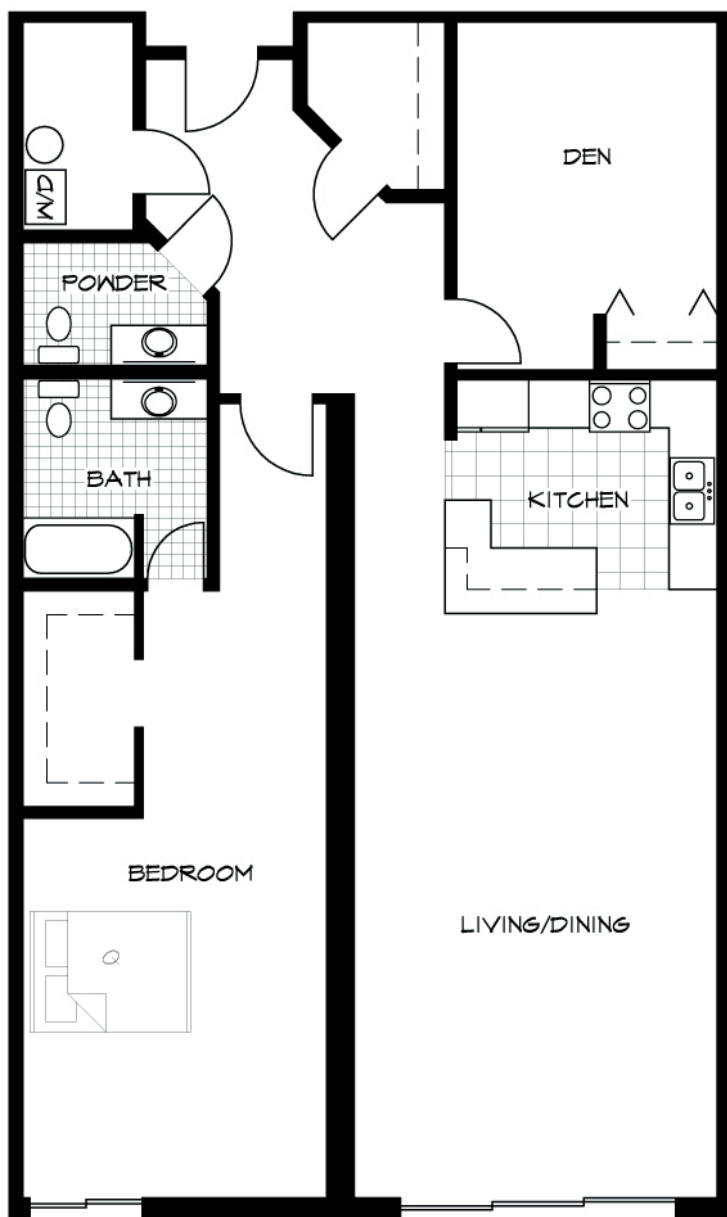


MELHUS  
 MANAGEMENT  
 COMPANY

REAL ESTATE INVESTMENT SERVICES

# The Harbours

300 West Michigan Street Duluth, MN



FLOOR PLAN - TYP 1 BEDROOM + DEN - "04 UNIT"  
1/8" = 1'-0"

<b>Units</b>	38
<b>Pricing</b>	1 Bedrooms From \$1,050 (facing the harbor) 2 Bedrooms From \$1,050 (facing the downtown) From \$1,250 (facing the harbor)
<b>Controlled Entry</b>	Yes
<b>Utilities</b>	Heat & A/C included, Resident pays electric
<b>Laundry Facility</b>	Washer & Dryer in each unit
<b>Decks/Patios</b>	Solariums (9 units)
<b>Parking/Garages</b>	Covered Parking Ramp stalls (1 included with apartment) Additional stalls available for \$53.75/month
<b>Headbolt Heaters</b>	No
<b>Amenities</b>	Club Room Two Guest Rooms (\$25/night) Manager On-site
<b>Pets</b>	No

\* Unit may have attached solarium

Contact: (218) 720-3712

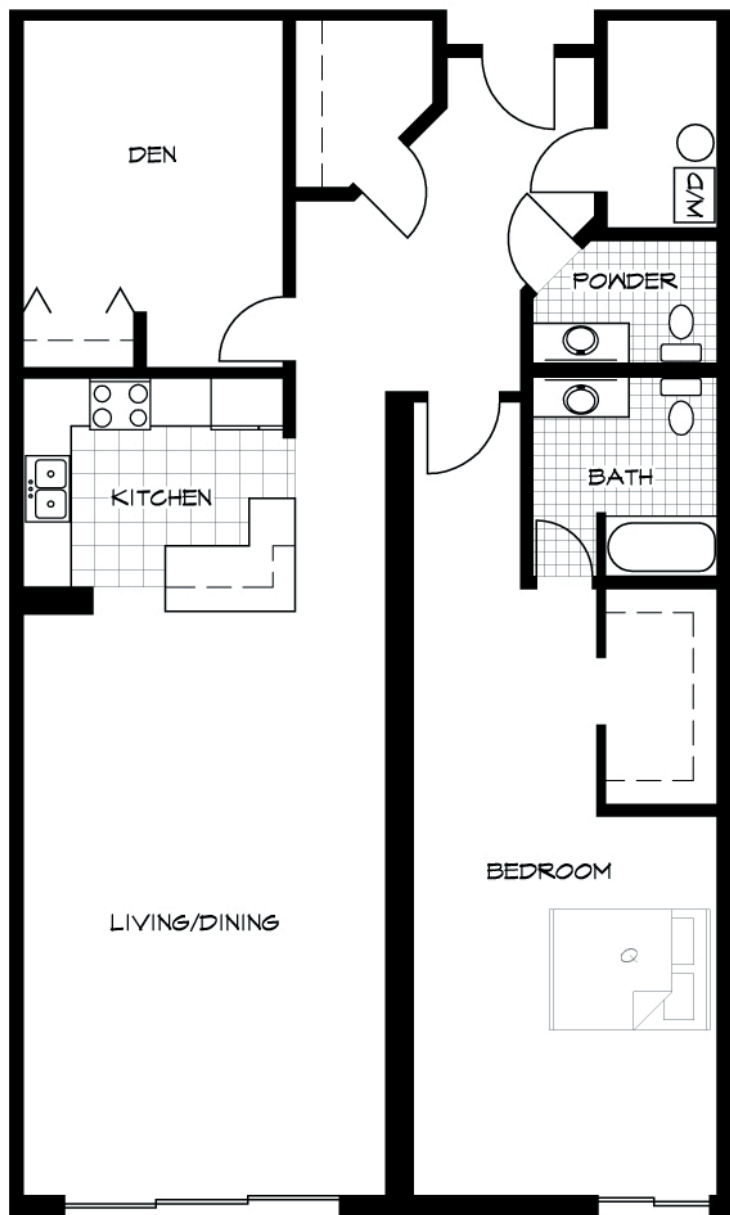
Email: [info@melhus.org](mailto:info@melhus.org)



MELHUS  
MANAGEMENT  
COMPANY  
REAL ESTATE INVESTMENT SERVICES

# The Harbours

300 West Michigan Street Duluth, MN



FLOOR PLAN - TYP | BEDROOM + DEN - "05 UNIT"

1/8" = 1'-0"

<b>Units</b>	38
<b>Pricing</b>	1 Bedrooms From \$1,050 (facing the harbor) 2 Bedrooms From \$1,050 (facing the downtown) From \$1,250 (facing the harbor)
<b>Controlled Entry</b>	Yes
<b>Utilities</b>	Heat & A/C included, Resident pays electric
<b>Laundry Facility</b>	Washer & Dryer in each unit
<b>Decks\Patios</b>	Solariums (9 units)
<b>Parking\Garages</b>	Covered Parking Ramp stalls (1 included with apartment) Additional stalls available for \$53.75/month
<b>Headbolt Heaters</b>	No
<b>Amenities</b>	Club Room Two Guest Rooms (\$25/night) Manager On-site
<b>Pets</b>	No

\* Unit may have attached solarium

Contact: (218) 720-3712

Email: [info@melhus.org](mailto:info@melhus.org)

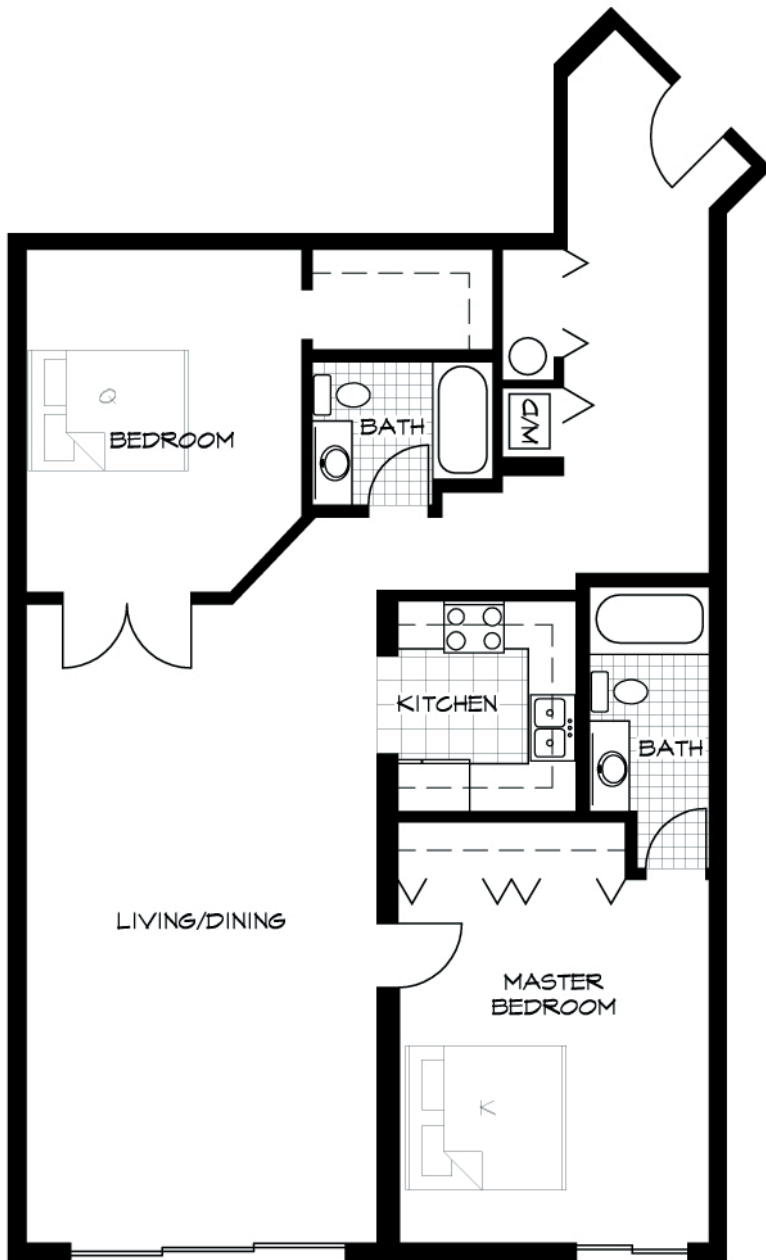


MELHUS  
MANAGEMENT  
COMPANY

REAL ESTATE INVESTMENT SERVICES

# The Harbours

300 West Michigan Street Duluth, MN



**FLOOR PLAN - TYP 2 BEDROOM - "06 UNIT"**  
 1/8" = 1'-0"

<b>Units</b>	38
<b>Pricing</b>	1 Bedrooms From \$1,050 (facing the harbor) 2 Bedrooms From \$1,050 (facing the downtown) From \$1,250 (facing the harbor)
<b>Controlled Entry</b>	Yes
<b>Utilities</b>	Heat & A/C included, Resident pays electric
<b>Laundry Facility</b>	Washer & Dryer in each unit
<b>Decks\Patios</b>	Solariums (9 units)
<b>Parking\Garages</b>	Covered Parking Ramp stalls (1 included with apartment) Additional stalls available for \$53.75/month
<b>Headbolt Heaters</b>	No
<b>Amenities</b>	Club Room Two Guest Rooms (\$25/night) Manager On-site
<b>Pets</b>	No

\* Unit may have attached solarium

Contact: (218) 720-3712

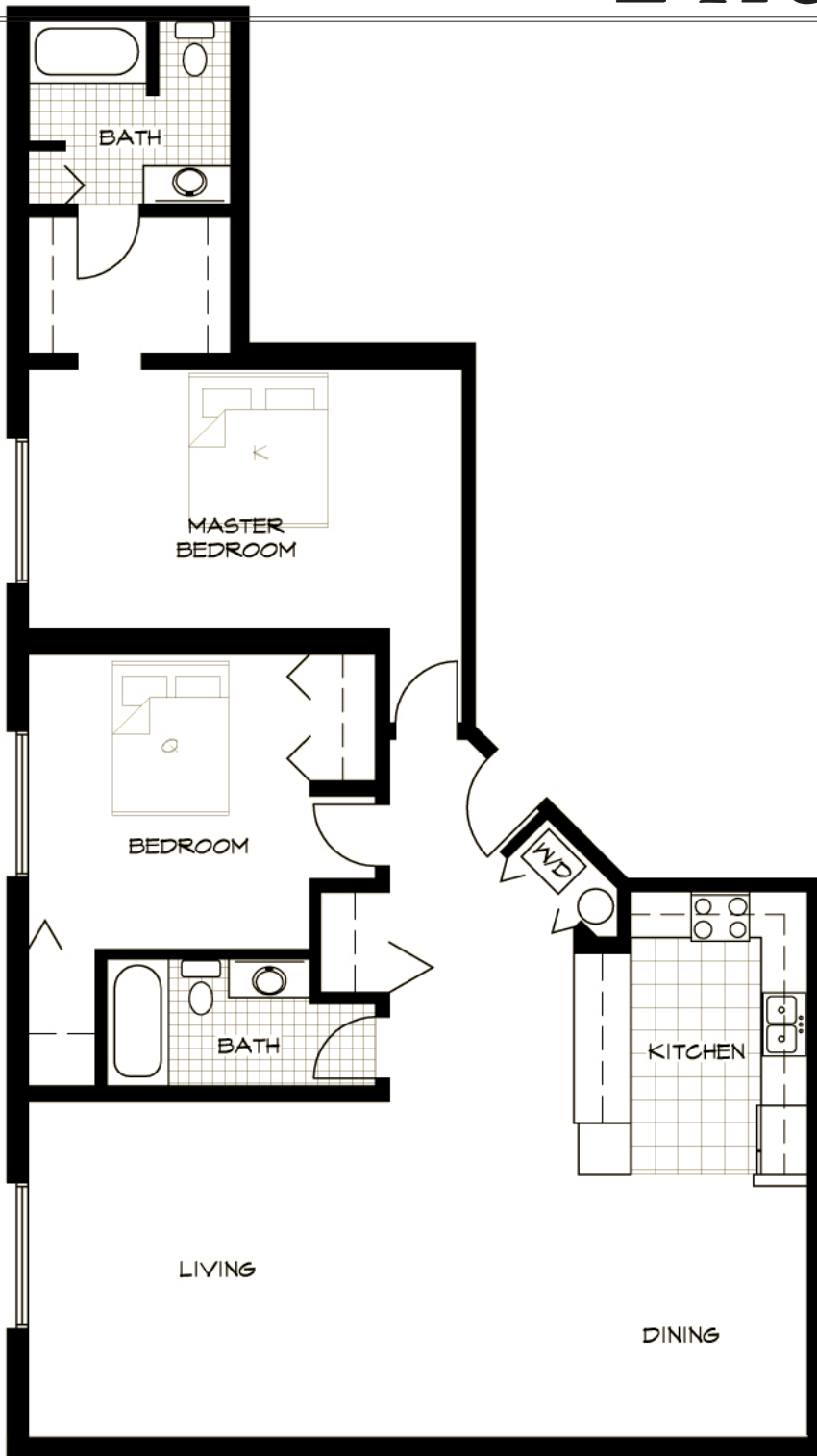
Email: [info@melhus.org](mailto:info@melhus.org)



**MELHUS  
 MANAGEMENT  
 COMPANY**  
 REAL ESTATE INVESTMENT SERVICES

# The Harbours

300 West Michigan Street Duluth, MN



<b>Units</b>	38
<b>Pricing</b>	1 Bedrooms From \$1,050 (facing the harbor) 2 Bedrooms From \$1,050 (facing the downtown) From \$1,250 (facing the harbor)
<b>Controlled Entry</b>	Yes
<b>Utilities</b>	Heat & A/C included, Resident pays electric
<b>Laundry Facility</b>	Washer & Dryer in each unit
<b>Decks\Patios</b>	Solariums (9 units)
<b>Parking\Garages</b>	Covered Parking Ramp stalls (1 included with apartment) Additional stalls available for \$53.75/month
<b>Headbolt Heaters</b>	No
<b>Amenities</b>	Club Room Two Guest Rooms (\$25/night) Manager On-site
<b>Pets</b>	No

Contact: (218) 720-3712

Email: [info@melhus.org](mailto:info@melhus.org)



MELHUS  
MANAGEMENT  
COMPANY

REAL ESTATE INVESTMENT SERVICES